

# Paper Chess Set

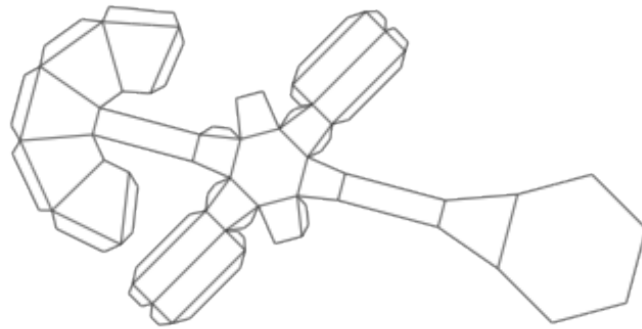
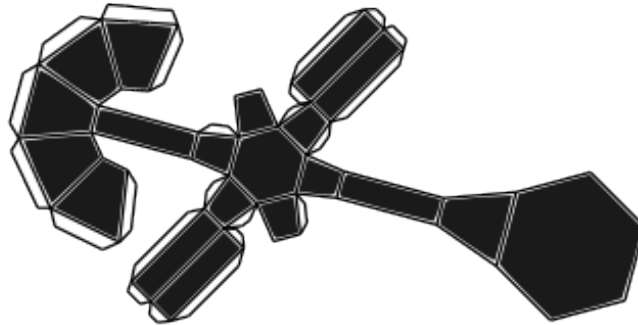
Crafted by Mohi Reza

This document consists of flat paper models that can be constructed into a full 3D chess set.

Print this document on a thick card. Cut out the flat paper models carefully and assemble them by folding and gluing the flaps together. Detailed instructions can be found [here](#).

You are free to distribute this document without modification.

## The Base



## The Crown



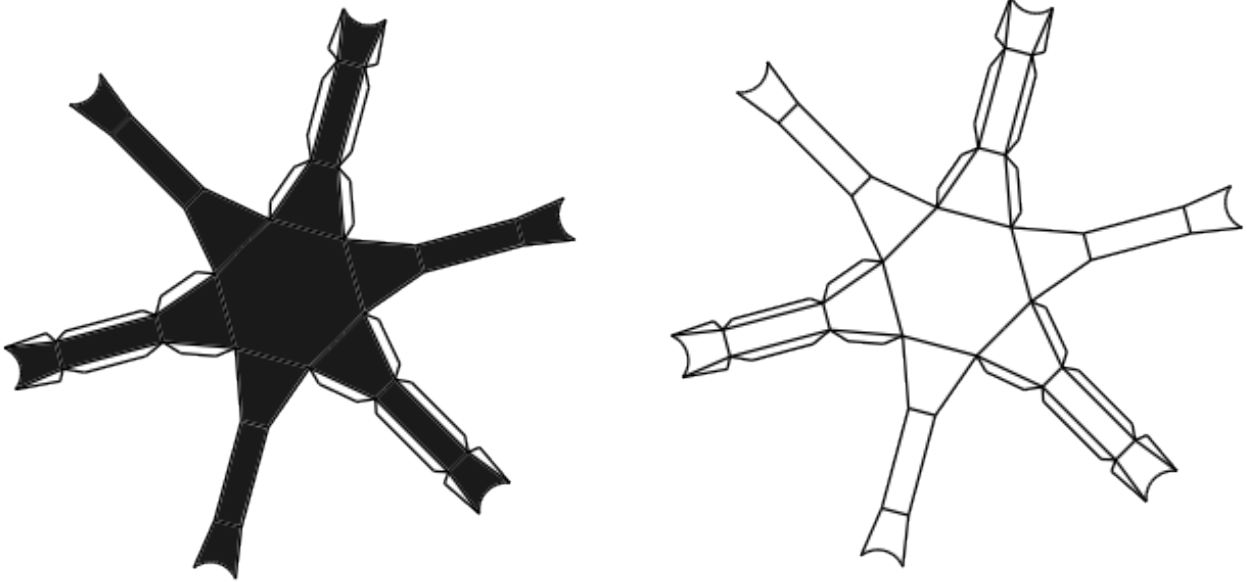
## The King

This piece consists of two parts, the base and the small crown at the top. Be extremely careful when you cut the crown. It is very easy to damage it.

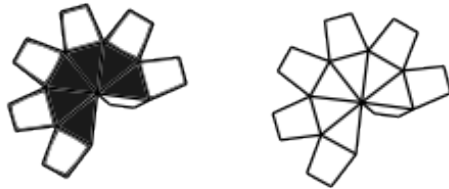
Designed by Mohi Reza

© 2013 [www.automath.blog.com](http://www.automath.blog.com)

## The Base



## The Top



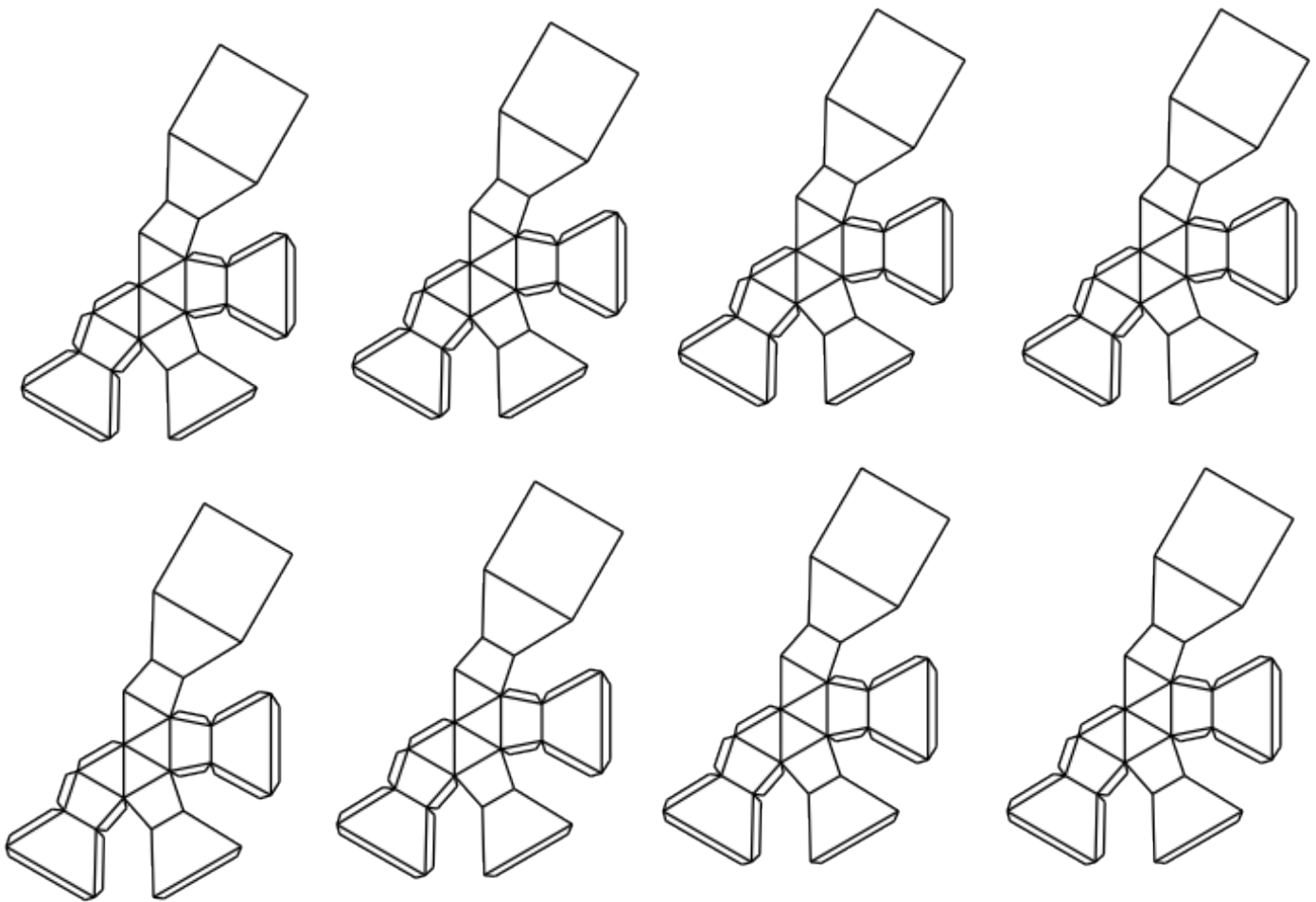
## The Queen

This piece consists of two parts, the base and the dome like top. The flange laps around each top are there to make it easy to join it to the base.

Designed by Mohi Reza

© 2013 [www.automath.blog.com](http://www.automath.blog.com)

# The White Pawns

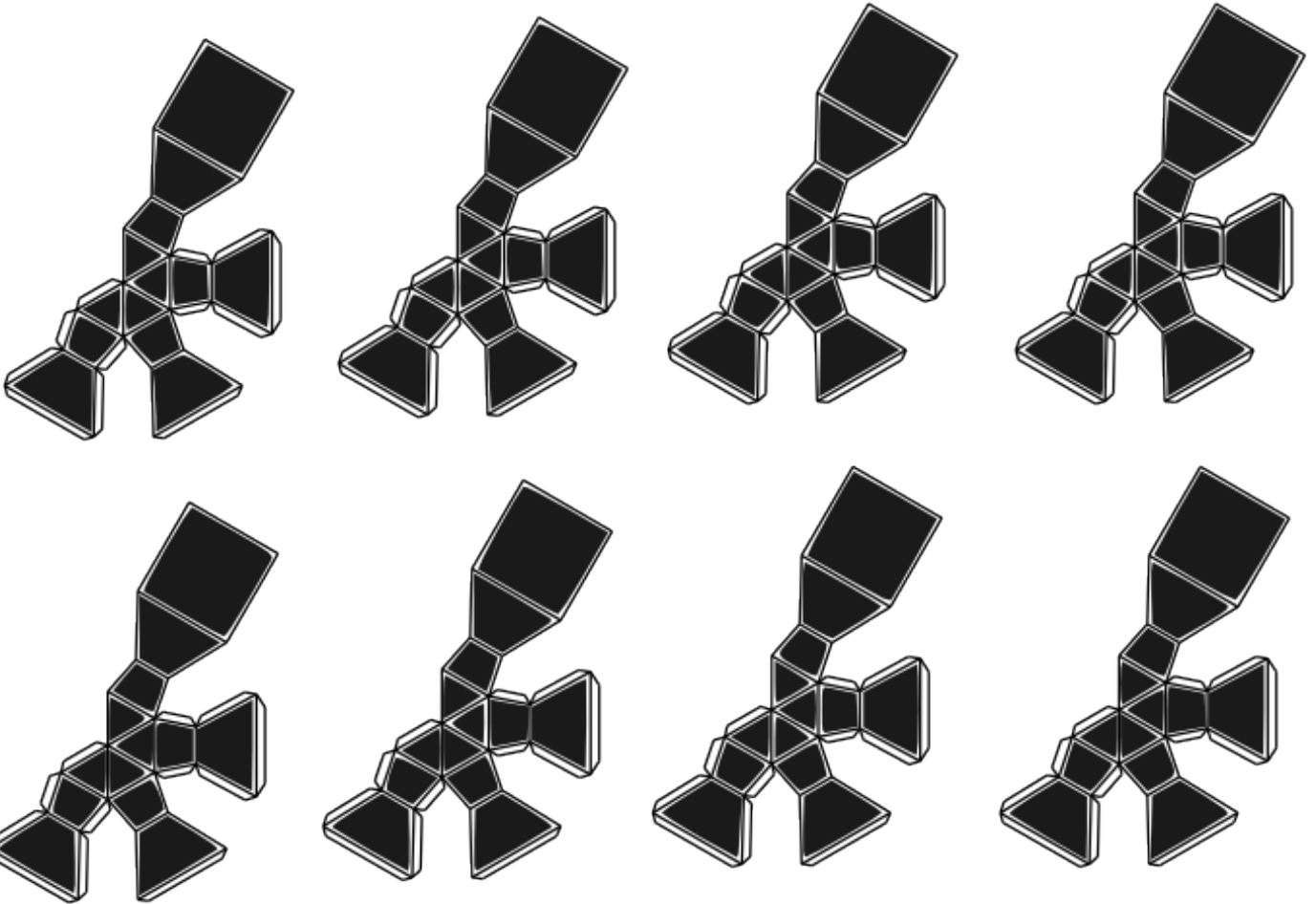


# The Pawn

This piece is comparatively difficult to assemble due to its miniscule size. Be careful not to damage the card as you cut out the edges.

Designed by Mohi Reza

# The Black Pawns



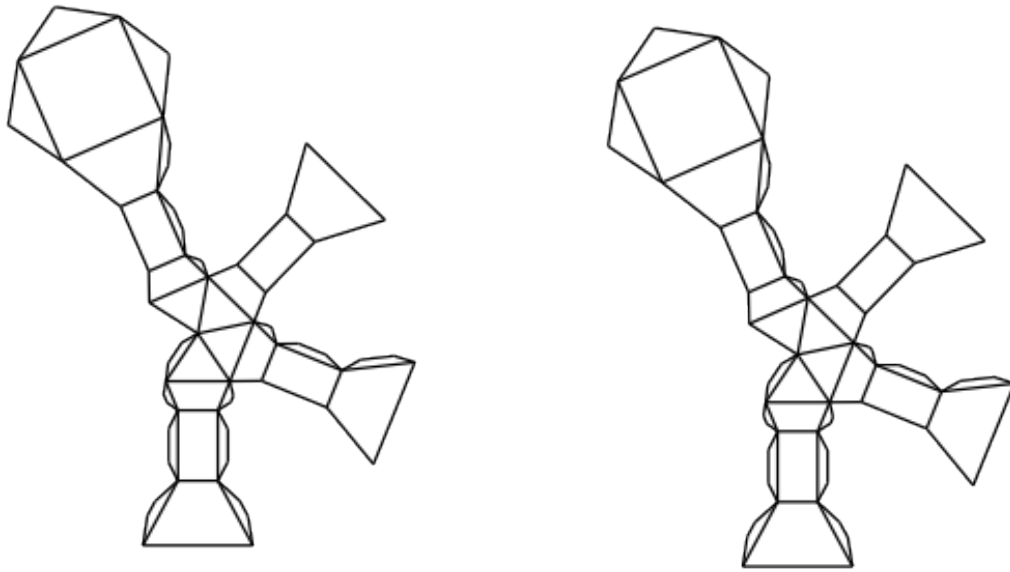
# The Pawn

This piece is comparatively difficult to assemble due to its miniscule size. Be careful not to damage the card as you cut out the edges.

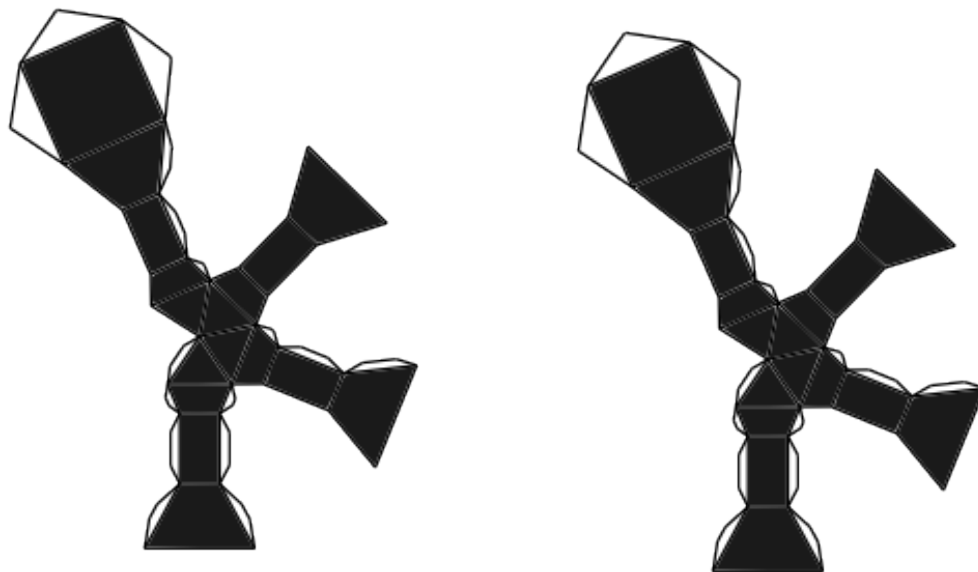
Designed by Mohi Reza

© 2013 [www.automath.blog.com](http://www.automath.blog.com)

## The White Bishops



## The Black Bishops



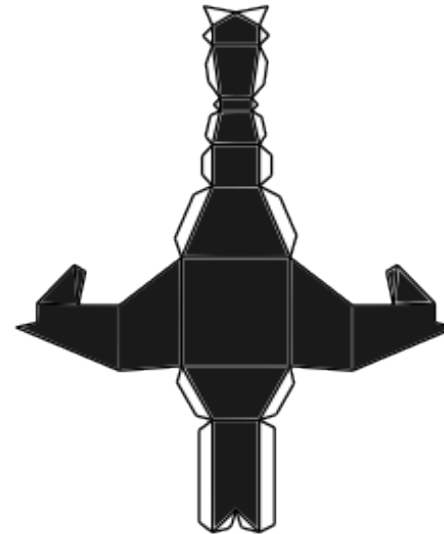
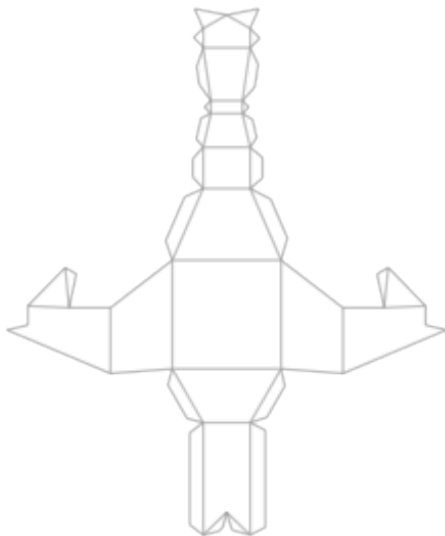
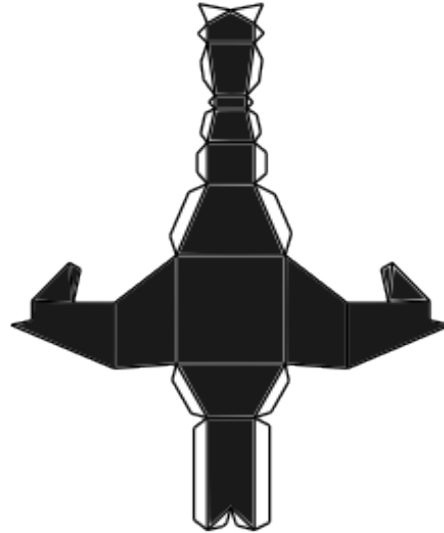
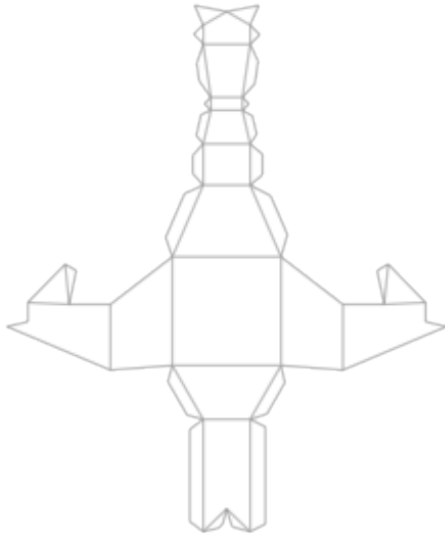
## The Bishop

This piece consists of just one part making it relatively easy to assemble.

Designed by Mohi Reza

© 2013 [www.automath.blog.com](http://www.automath.blog.com)

# The Knight



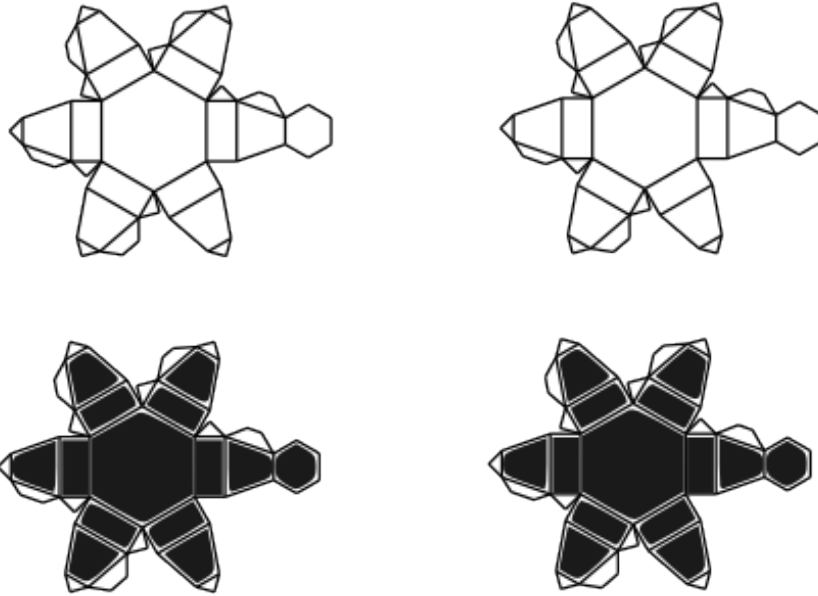
## The Knight

This piece has been carefully crafted to resemble the perfect knight. Each side is attached to the base to make it sturdy.

Designed by Mohi Reza

© 2013 [www.automath.blog.com](http://www.automath.blog.com)

## The Base



## The Top



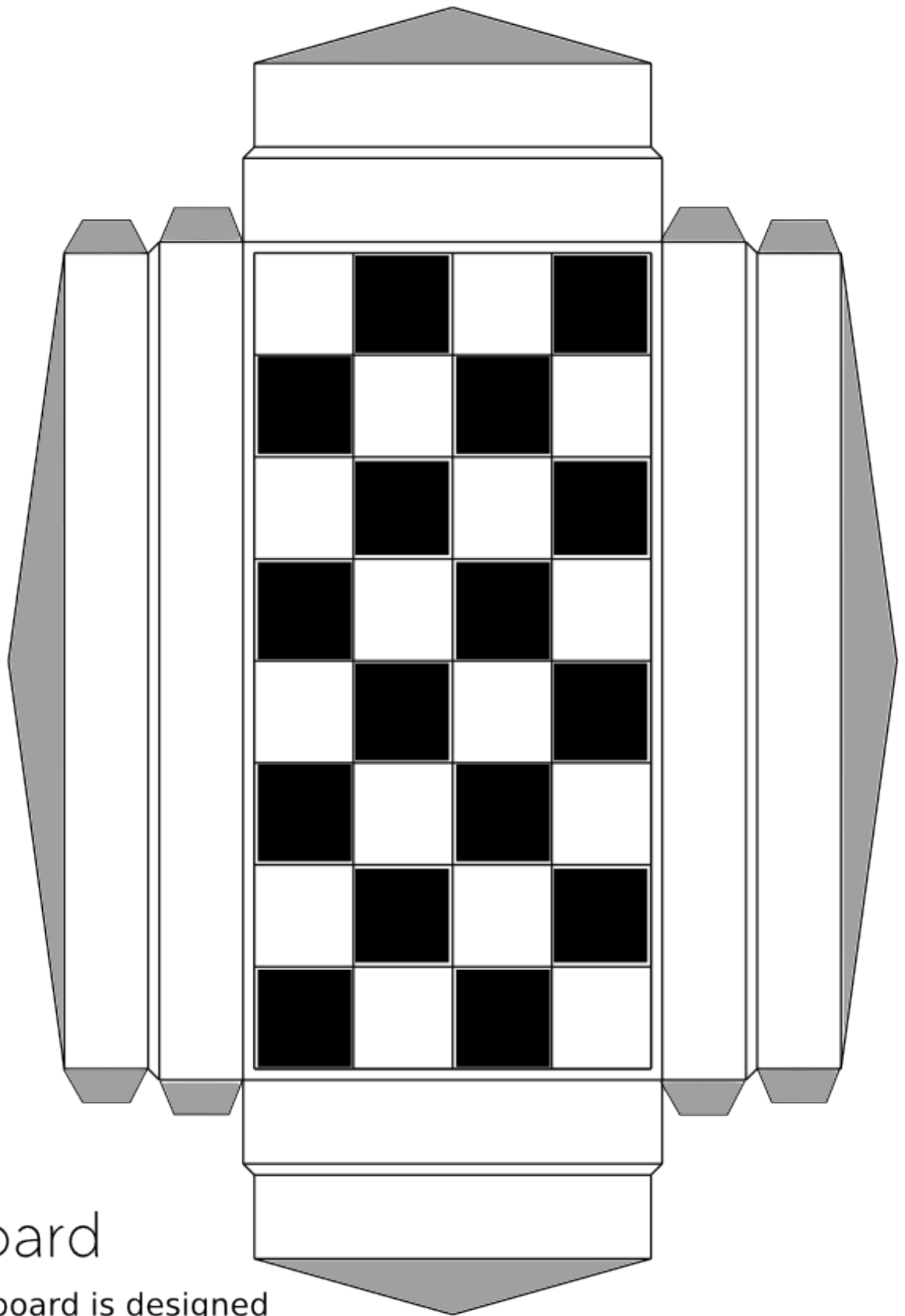
## The Rook

This piece consists of two parts, the base and the top. Assemble them separately and then join them by delicately gluing them together.

Designed by Mohi Reza

© 2013 [www.automath.blog.com](http://www.automath.blog.com)





## The Board

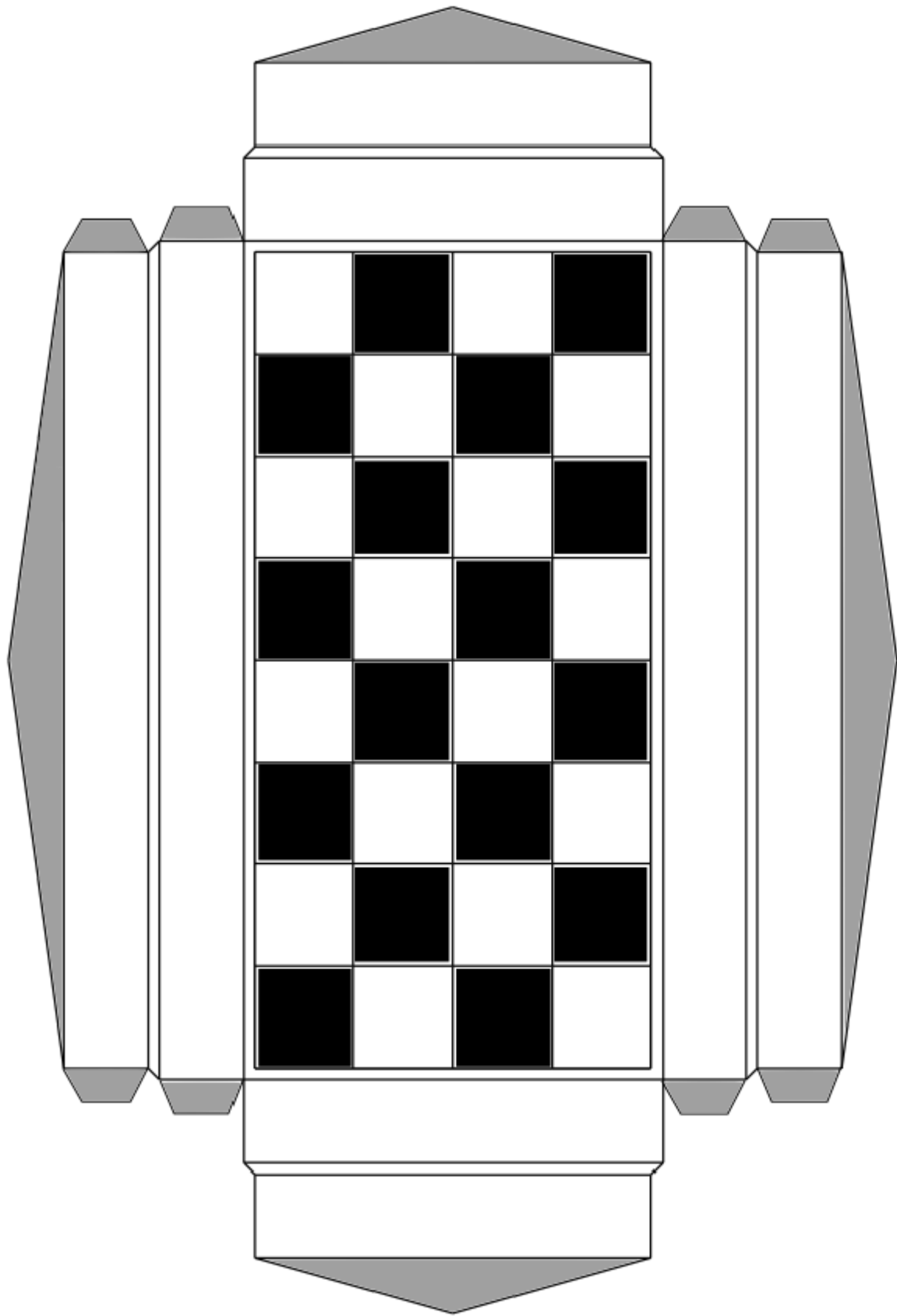
The Chess board is designed to act as both a game platform and a container for the pieces.

**Print this sheet twice**

You can use a wide clear piece of tape as a hinge between the two parts and a small magnet to to keet the them shut.

Designed by Mohi Reza

© 2013 [www.automath.blog.com](http://www.automath.blog.com)



Designed by Mohi Reza

© 2013 [www.automath.blog.com](http://www.automath.blog.com)